

City x City Festival

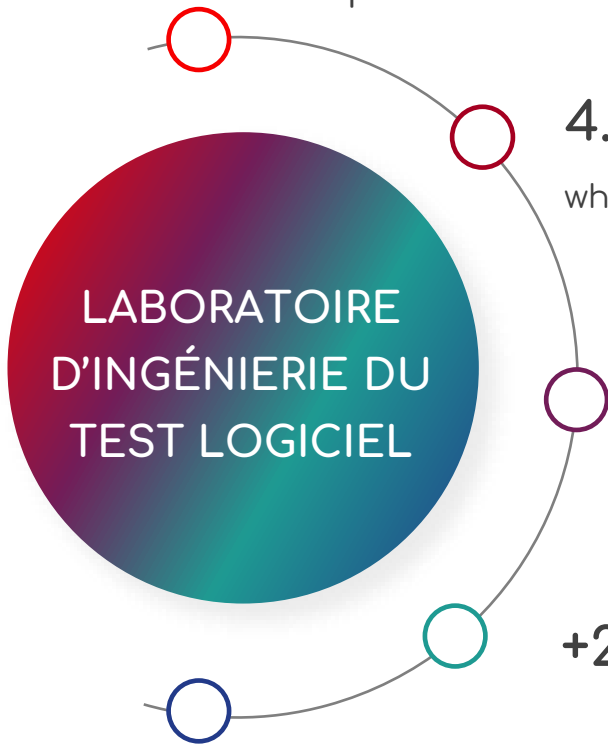
KEREVAL Introduction & Ideas

January 13th, 2022
Alain RIBAULT, CTO



Located in Rennes, Brittany, France

Independent SME with 18 years of experience

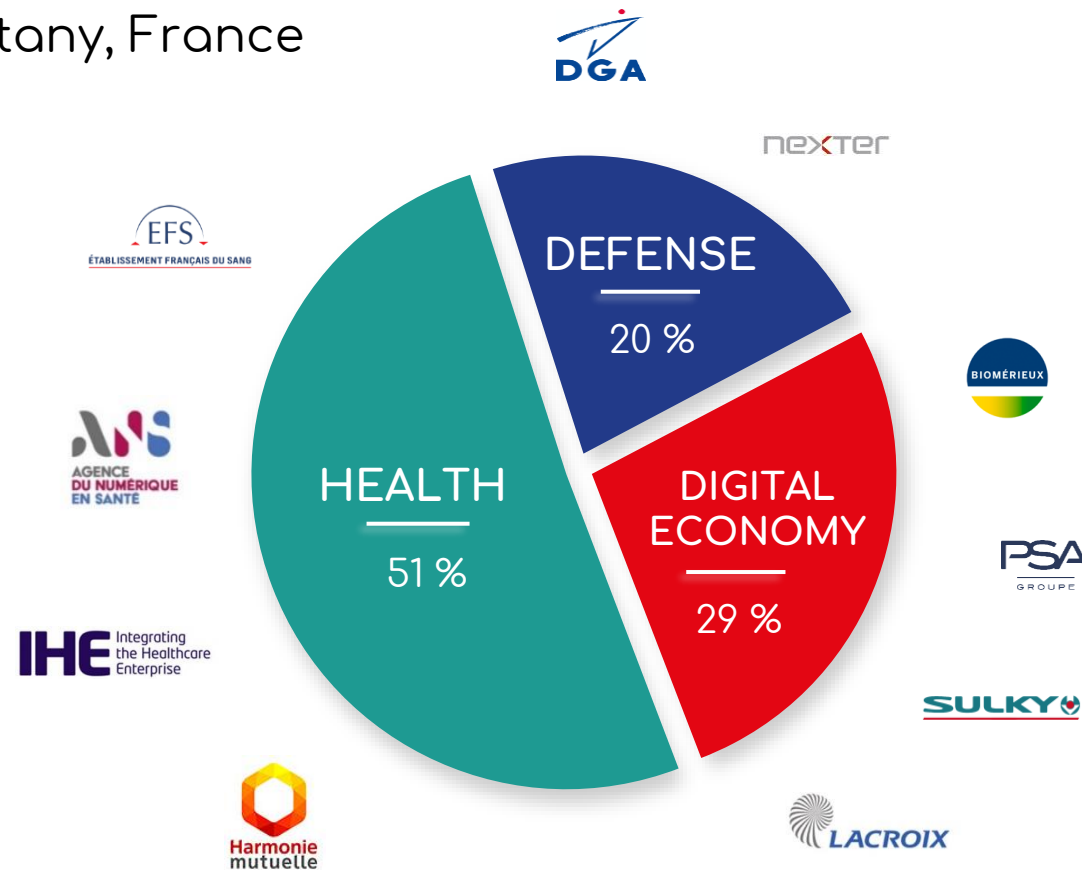


4.1 M€ turnover in 2020, 24% of which is generated internationally

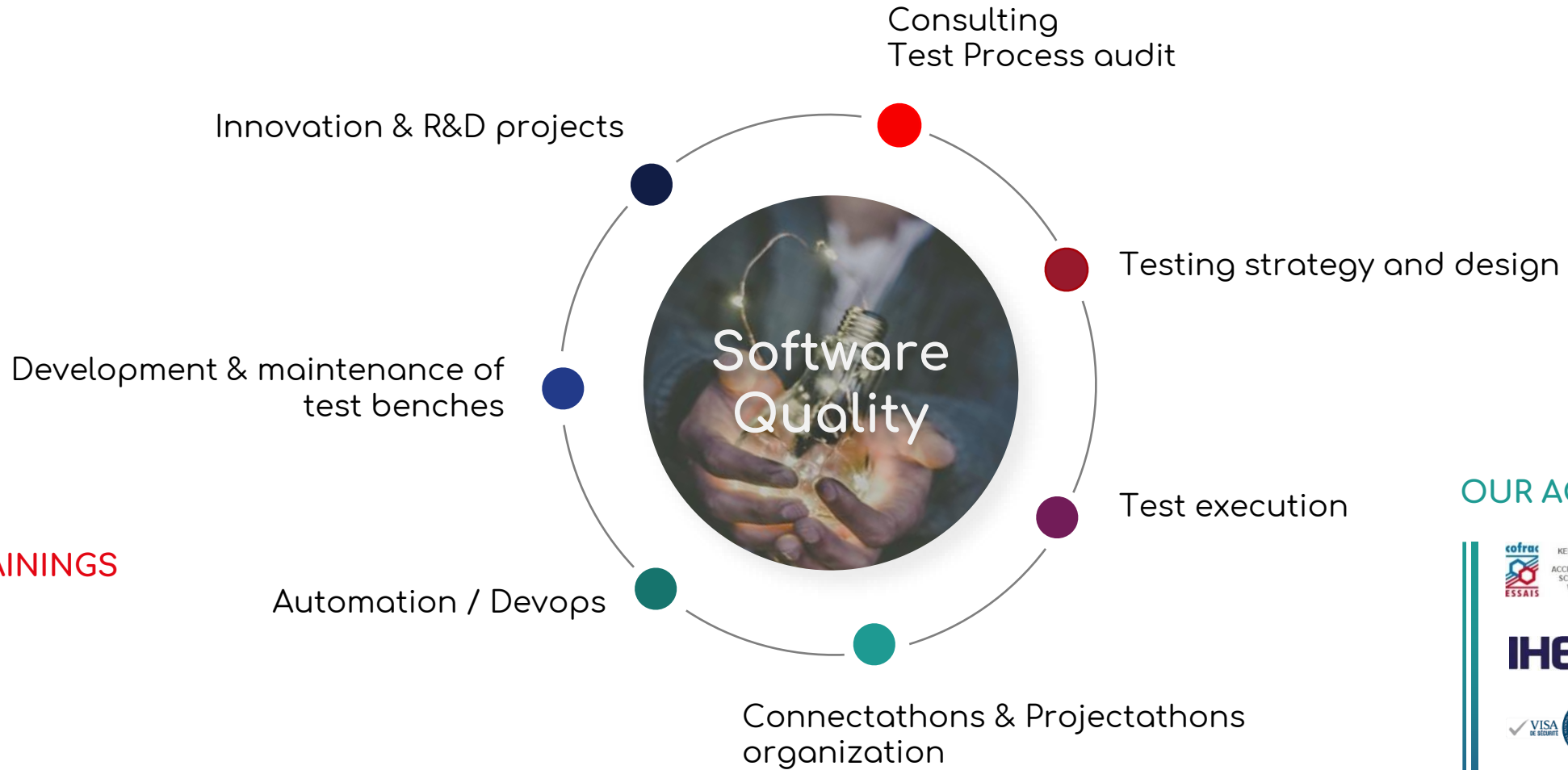
65 employees

+20% annual growth

16 % of production activity in R&D **R&D**



OUR VALUES: Excellence - Respect - Commitment



OUR TRAININGS



OUR ACCREDITATIONS



KEREVAL HEALTH LAB TESTING ACCREDITATION N° 1-2347 SCOPE AVAILABLE ON WWW.COFRAC.FR



IHE Integrating the Healthcare Enterprise



VISA DE ECONOMIE



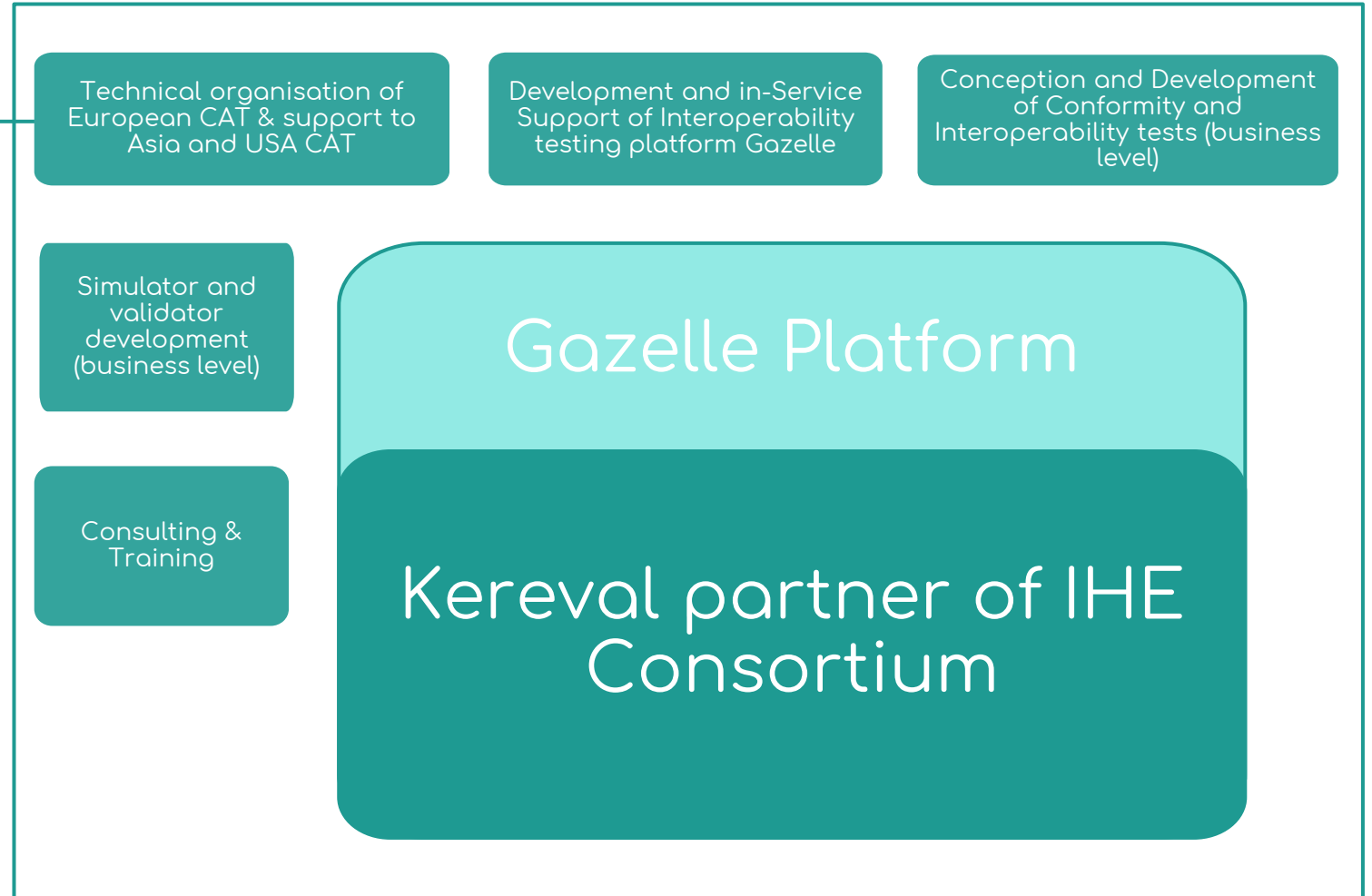
AEF AGRICULTURAL INDUSTRY ELECTRONICS FOUNDATION



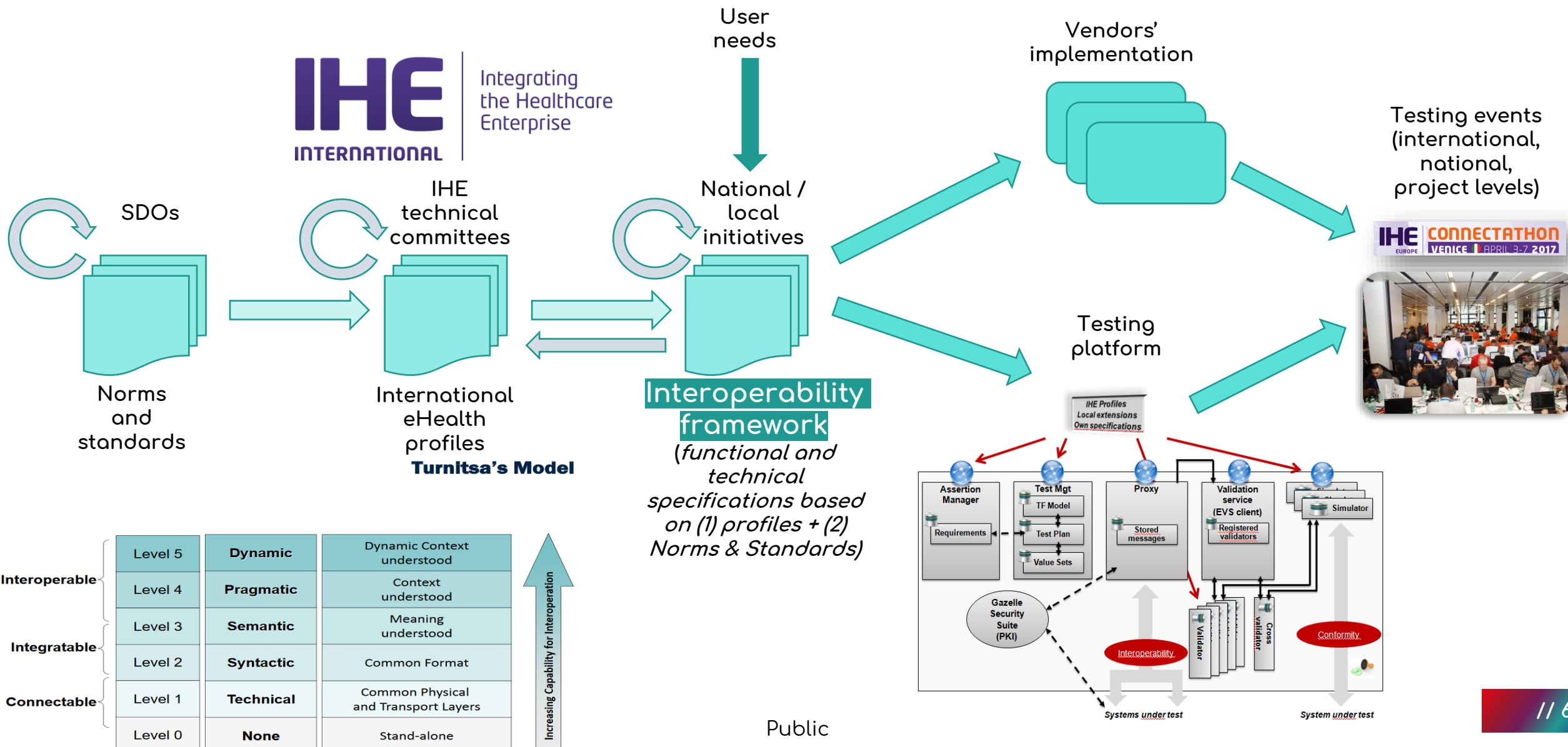
ISO BUS



IHE is an initiative by healthcare professionals and industry to improve the way computer systems in healthcare share information. IHE promotes the coordinated use of established standards such as DICOM and HL7 to address specific clinical needs in support of optimal patient care. Systems developed in accordance with IHE communicate with one another better, are easier to implement, and enable care providers to use information more effectively.



Testing the interoperability framework

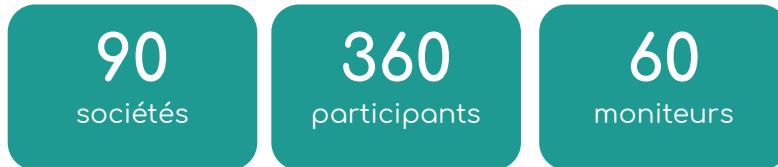


Interoperable	Level 5	Dynamic	Dynamic Context understood
	Level 4	Pragmatic	Context understood
Integratable	Level 3	Semantic	Meaning understood
	Level 2	Syntactic	Common Format
Connectable	Level 1	Technical	Common Physical and Transport Layers
	Level 0	None	Stand-alone

↑ Increasing Capability for Interoperation

Public

Key figures of Connectathon 2017 at Venice in one week



© IHE-Europe Copyright

Public

Community

- > International
- > European
- > National
- > [...]Which defines interoperability characteristics (with, if necessary, instantiations related to business and local regulation)

Interoperability is necessary (Information Digitalization)

- > Syntactic
- > Semantic
- > Contextual

Software companies which implement these standards

Technical committees, User group

Connectathons, projectathons

Conformity Assessment

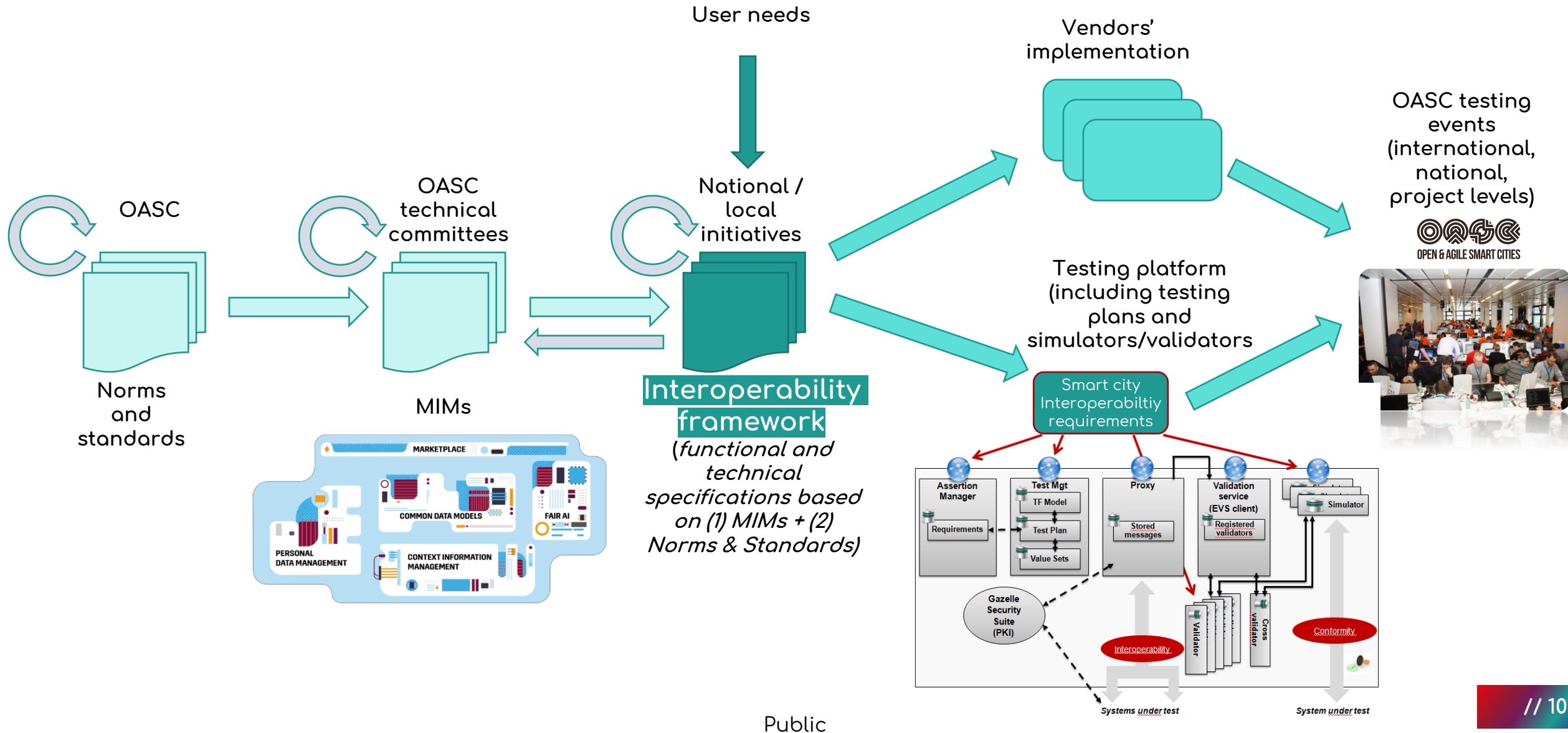
Smart City

- > Has a community and working groups at different levels
- > Needs interoperability
- > It should work !!!

Our idea

- > Develop a first proof of concept on a testing platform to show how to handle OASC/MIMS interoperability testing with operational use cases (first test implementation & results with MIMs 1 & 2)
- > Work with OASC and other interested partners to define smart city interoperability framework “at business level” (water management, air management, well-being, etc.) based on real use cases and needs
- > Organize testing events and show cases
- > And why not, define a “conformance body” to push the recognition of smart city interoperability and the adoption at different levels (Europe, country, city)

Testing interoperability based on OASC



Thank you for attention

<http://www.kereval.com>
alain.ribault@kereval.com



Testing interoperability !!!